

# PALISADE





# Because of you.

At Hyundai, we believe that only with you in mind will we be able to provide progress, innovation, sustainability and mobility that evolves the driving experience.

We prioritize research and development in connected and clean mobility solutions, continuing to push boundaries and challenge conventional thinking to bring you a connected experience and a sustainable vision for the future.

We are inspired to build platforms and technology that provide you with more ways to enjoy quality time with our vehicles. To live a comfortable and connected life where you enjoy the journey, not just the destination.

We also tailor our vehicles with features that meet the demands of our Canadian landscape, so you can take on our extreme winters and amazing summers in comfort and with confidence. And, of course, we back our vehicles with one of the best automotive warranties in the industry.

We do all of this because of you.







# The room to move you.

The 2023 PALISADE features standard 8-passenger/available 7-passenger premium seating space in an elegantly modern and intuitive interior that thinks about everyone in every row. With incredible convenience technologies at hand and a wealth of Hyundai SmartSense™ safety innovations, the 2023 PALISADE is truly a remarkable SUV that is perfect for family life.





# Explore with confidence.

The 3.8L Atkinson GDI V6 engine with 291 horsepower and 262 lb.-ft. of torque provides an abundance of power and responsiveness. Shift-by-wire technology means you can effortlessly change gears at the press of a button with the smooth-shifting 8-speed automatic transmission.



## Standard Drive Mode Select with terrain modes

With Drive Mode Select, choose the driving mode that suits your preferred driving style. Use the dial to switch between different modes, which will adjust the engine, transmission and steering control settings.



### COMFORT mode

Balanced and stable control, great for everyday driving.



### ECO mode

Eco mode is dedicated to fuel conservation, maintaining fuel efficiency by sending power mainly to the front wheels.



### SPORT mode

Sport mode adjusts the throttle and steering response for greater agility and a more responsive drive.



### SMART mode

Smart mode automatically adjusts between all available modes based on driver input to optimize your drive.

## Standard HTRAC™ All-Wheel Drive with multi-terrain control modes

For the ultimate in handling, performance and traction, enjoy our HTRAC™ All-Wheel Drive system. It allows you to select the appropriate traction setting that best suits your current driving conditions with three dedicated terrain modes.



### SNOW mode

Optimized for snow-covered and slippery roads. This mode will distribute the driving force of the vehicle based on road conditions to help suppress wheel slippage.



### MUD mode

Optimized for muddy, rutted or uneven terrain. In Mud mode, sensors can instantly detect wheel slippage and automatically redirect torque to the wheel with the most traction, so that you can keep moving despite the hazardous driving conditions.



### SAND mode

Optimized for loose sand or deep gravel. Special algorithms developed for sand driving secure the right gear and help ensure each wheel receives the right amount of torque at the right moment to deliver optimal tire traction.

# Take on every day in style.

No matter the busy day ahead, the versatile PALISADE will get you through it all with elevated style. A dominant wide cascading grille and standard 20" alloy wheels emphasize the strength and luxurious quality that lies within. The signature composition of the LED daytime running lights and vertically stacked headlights makes a striking statement and leaves a lasting impression.



Ultimate Calligraphy pre-production model shown.  
May not be exactly as shown.

Available Calligraphy-exclusive 20" alloy wheels.



Available LED headlights with a Calligraphy-exclusive front fascia



Available LED tail lights



# Command the road in comfort.

No detail has been overlooked. Everything in the cabin is crafted with fine materials and designed for maximum comfort. A wealth of impressive features wraps you in ultimate luxury no matter where you're seated. Sink into the bolstered front seats that feature available Nappa leather with premium quilted details, and enjoy customized comfort with the available 8-way power driver's seat and ergo-motion support.



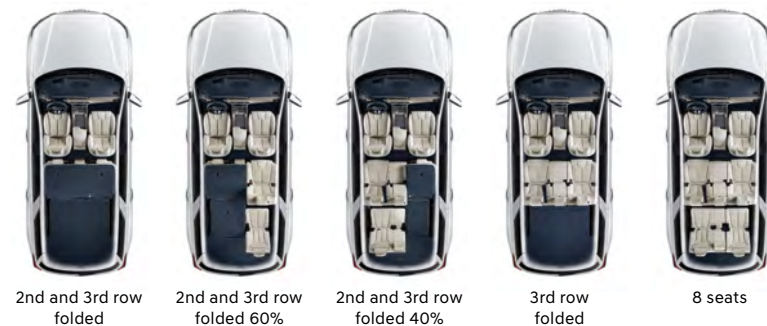
Ultimate Calligraphy pre-production model shown.  
May not be exactly as shown.

# Thoughtful features throughout the cabin.

The PALISADE does an exceptional job of accommodating everyone's needs, starting with seven standard USB outlets dispersed throughout the cabin.

## Cargo versatility.

The cabin space can be easily configured in a variety of different ways to tackle the demands of the moment. Enjoy up to 2,447 L total cargo capacity with all rear seats folded down.



8-passenger model shown.



## Available second-row captain's chairs

Available second-row captain's chairs further the luxury experience and feature available heated and ventilated seats.



## Standard rear air vents

Innovative rear air vents keep air flowing and allow rear passengers to select between a focused, partially diffused and fully diffused stream of air.



## Available dual-zone automatic climate control

Thanks to the available dual-zone automatic climate control with rear HVAC controls, both the driver and front passenger, as well as the second-row passengers, can select their desired temperatures.



## Available in-vehicle intercom system

Easily communicate with those in the third row with an available in-vehicle intercom system.



## Standard rear-seat Quiet Mode

Keep things extra quiet for sleeping children by setting the audio system to Quiet Mode to mute the rear speakers.



# Technology surrounds you.

Apple CarPlay™, Android Auto™ and Bluetooth® connections all come standard to make accessing your favourite smartphone apps and taking phone calls effortless. The standard 12.3" touch-screen display offers a built-in navigation system and an available surround view monitor that displays a 360-degree view of the PALISADE for added guidance when parking in tight spaces. Available technologies like the 12.3" full digital instrument cluster and windshield-projected head-up display offer various information displays to command the road with confidence.



Available smart power liftgate



Available 12.3" full digital instrument cluster with Blind View Monitor



Available head-up display



Available harman/kardon® audio system



Available surround view monitor



# Ultimate convenience. Ultimate connectivity.

Bluelink<sup>®</sup> is our available connected vehicle system that conveniently keeps you connected with your Hyundai via the smartphone app and offers a suite of services at the press of a button.

This innovative connected system gives you the ability to remotely lock/unlock and start your vehicle, adjust climate controls, keep track of your vehicle's health with smart diagnostic tools and so much more.



Remote start with  
climate control

## SOS

SOS emergency and  
roadside assistance



Automatic collision  
notification



Remote lock/unlock



Find my car



Local search



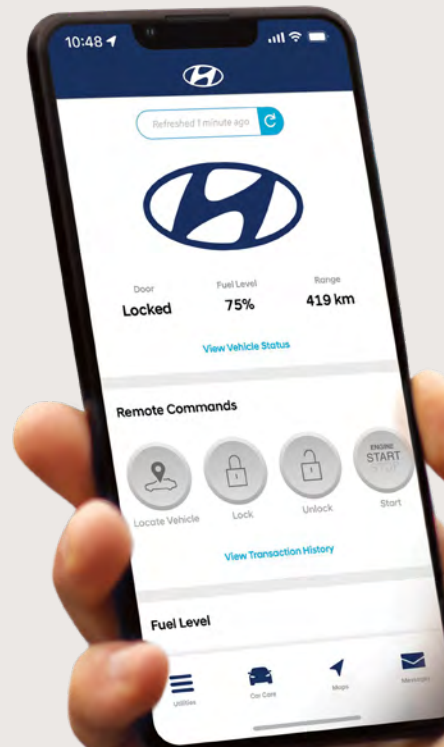
Real-time  
diagnostics



Find a dealer

## 3 YEAR

Complimentary  
3-year subscription on  
equipped models





# Hyundai SmartSense™

Road-trip with confidence and peace of mind with the extensive list of Hyundai SmartSense™ safety technologies offered with the PALISADE.

## Standard features:



Forward Collision-Avoidance Assist with Pedestrian, Cyclist and Junction-Turning Detection



Lane Departure Warning with Lane Keeping Assist



Adaptive Cruise Control with traffic stop and go



Lane Following Assist



High Beam Assist



Driver Attention Warning



Parking Distance Warning - Reverse



Rear Occupant Alert with ultrasonic sensors



Blind-Spot Collision Warning



Rear Cross-Traffic Collision-Avoidance Assist



Safe Exit Assist



Power child locks



Tire Pressure Monitoring System



7 airbags

## Available features:



Forward Collision-Avoidance Assist with Pedestrian, Cyclist, Junction-Turning and Junction-Crossing Detection



Surround view monitor



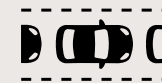
Blind View Monitor



Parking Distance Warning - Front



Parking Collision-Avoidance Assist - Reverse



Highway Driving Assist 2



Remote Smart Parking Assist



# Find the PALISADE that is right for you.

## Preferred

Standard equipment includes:

### Performance features:

- Auto-levelling rear suspension
- HTRAC™ All-Wheel Drive with multi-terrain control modes
- Electronic parking brake
- 3.8L Atkinson GDI V6 engine with idle start-stop
- 8-speed automatic transmission with SHIFTRONIC® paddle shifters
- 4-wheel disc brakes and ABS with EBD
- Button-type shift-by-wire gear selector
- Drive Mode Select

### Exterior features:

- 20" alloy wheels
- Dark chrome-coated front grille
- Side mirrors with LED turn signal indicators
- LED daytime running and position lights
- LED headlights (low and high beam)
- Acoustically laminated windshield
- Acoustically laminated front windows
- Roof side rails
- Automatic projector headlights (low and high beam)
- Heated power-adjustable side mirrors
- Solar front glass and rear privacy glass
- Body colour rear spoiler with LED HMSL
- Body colour heated power-adjustable side mirrors
- Temporary spare tire (alloy)

### Interior features:

- Proximity keyless entry with push-button ignition and remote start
- Single tilting and sliding power sunroof
- 4.2" LCD cluster
- 8-way power driver's seat with 2-way lumbar support
- Dual-zone automatic temperature control with CleanAir ionizer and auto-defogging windshield system
- Rear single-zone automatic temperature control
- Heated rear seats
- Stain resistant cloth seats

- Electrochromic auto-dimming rearview mirror with HomeLink®
- Manual rear sunshade blinds
- 8-passenger seating capacity
- 12.3" touch-screen display with wireless Apple CarPlay™ and Android Auto™
- Heated front seats
- Leather-wrapped heated haptic steering wheel
- Bluetooth® hands-free phone system with voice recognition
- 7 USB ports
- Rearview camera with dynamic guidelines
- Smart one-touch second-row folding and sliding seats
- Power windows with driver's and front passenger's auto-up/down
- Rear-seat Quiet Mode
- Cargo cover and net
- SiriusXM™ and HD radio

### Safety features:

- Blind-Spot Collision Warning
- Rear Cross-Traffic Collision-Avoidance Assist
- Safe Exit Assist
- Rear Occupant Alert with ultrasonic sensors
- Power child locks
- Adaptive Cruise Control with traffic stop and go
- Forward Collision-Avoidance Assist with Pedestrian Detection
- Lane Departure Warning with Lane Keeping Assist
- Lane Following Assist
- High Beam Assist
- Driver Attention Warning
- Parking Distance Warning – Reverse
- Tire Pressure Monitoring System
- 7 airbags

## Urban

Includes Preferred standard equipment plus:

### Exterior features:

- 20" dark alloy wheels
- Smart power liftgate
- Satin chrome coated door handles
- Rugged skid plates (front lower bumper and rear skid)
- Rugged lower door garnishes (fender, front door and rear door)

### Interior features:

- Leatherette seats
- Surround view monitor
- 8-way power passenger's seat (including height adjustment)
- Driver's integrated memory system — seat and side mirrors
- Bluelink telematics
- harmon/kardon® premium audio system with 12 speakers
- Ventilated front seats
- 60/40 power-folding, unfolding and reclining third-row seats
- Power-extendable driver's seat cushion
- Deluxe door scuff
- Leather-wrapped crash pad garnish
- Driver in-vehicle intercom system
- LED driver and passenger sun visor lighting
- 12.3" LCD instrument cluster
- LED map, room and cargo lights
- Driver's seat thigh extension with driver's 4-way lumbar support

### Safety features:

- Highway Driving Assist + NSCC
- Blind View Monitor
- Parking Distance Warning — Front
- Navigation-based Adaptive Cruise Control

### Optional:

- 7-passenger seating with second-row captain's chairs

## Ultimate Calligraphy

Includes Luxury 7-passenger standard equipment plus:

### Exterior features:

- Exclusive 20" wheels (Sputtering / Alloy)
- Calligraphy-exclusive front grille
- Calligraphy-exclusive front and rear fascia
- Calligraphy-exclusive front and rear skid plates
- LED tail lights
- Rain-sensing windshield wipers
- Body-coloured wheel arches and fascia trim
- Puddle lamps with logo

### Interior features:

- Premium Nappa leather seating surfaces
- Dual sunroofs; second-row fixed wide panel
- Ergo-motion driver's seat
- Ambient lighting
- Body colour door garnish
- Head-up display
- Ventilated rear seats (captain chairs)
- Rapid wireless charging pad\*
- Ventilated second-row seats
- Microfibre suede A/B/C pillars (standard D pillar)
- Microfibre suede roof trim
- Microfibre suede sun visors
- Quilted leather door panels
- 110 V A/C inverter
- Digital full-display rearview mirror
- Wing-out headrests

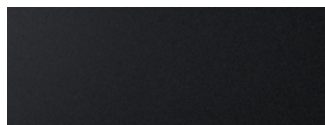
### Safety features:

- Remote Smart Parking Assist
- Parking Collision-Avoidance Assist – Reverse
- Advanced Forward Collision-Avoidance Assist with Pedestrian, Cyclist, Junction-Turning and Junction-Crossing Detection
- Highway Driving Assist 2

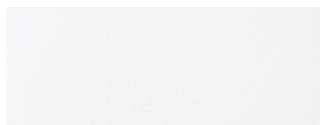


# Colours and wheels.

## Exterior colours\*



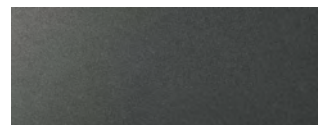
**Abyss Black**



**Hyper White**



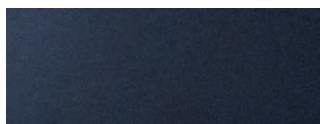
**Typhoon Silver**



**Steel Graphite**



**Sierra Burgundy**

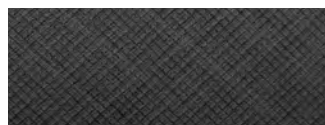


**Moonlight Cloud**

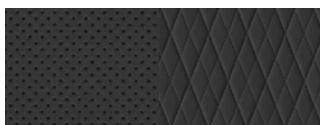


**Robust Emerald**  
Available on Ultimate  
Calligraphy model only

## Interior colours\*



**Obsidian Black cloth**  
Standard on Preferred model  
(not available with Robust  
Emerald)



**Midnight Black leatherette**  
Standard on Urban model



**Harbour Grey two-tone leatherette**  
Available on Urban model (Hyper  
White, Steel Graphite and Moonlight  
Cloud exterior colours only)



**Midnight Black Nappa leather**  
Standard on Ultimate  
Calligraphy model



**Harbour Grey two-tone Nappa leather**  
Available on Ultimate  
Calligraphy model (Hyper White,  
Steel Graphite and Moonlight  
Cloud exterior colours only)



**Pearl Beige two-tone Nappa leather**  
Available on Ultimate Calligraphy  
model (Abyss Black, Hyper White  
and Sierra Burgundy exterior  
colours only)

## Wheels



**20" alloy wheel**  
Standard on  
Preferred model



**20" dark alloy wheel**  
Standard on  
Urban model



**20" sputtering / alloy wheel,**  
**Calligraphy-exclusive**  
Standard on Ultimate  
Calligraphy model

\*Exterior and interior colour options and/or availability may change without notice. Choice of interior colour is dependent on model and/or exterior colour selection. Colours shown are for reference only and may vary from the actual hue. Visit [hyundaicanada.com](http://hyundaicanada.com) or see your dealer for details.

# Accessories.



## Cross rails

This durable, quick-locking cross rail system lets you transport cargo easily, without sacrificing interior room.



## Premium all-weather floor liners

Premium all-weather floor liners were designed to cover the interior carpet providing maximum protection against the elements that other mats cannot offer. Remove carpet mats prior to installation.



## Side steps

Heavy-duty stainless steel chrome step tubes with slip-resistant foot pads will provide a solid step and unique eye-catching design exclusive to Hyundai.



## Premium folding cargo tray

Ultimate protection for your cargo area and the back of the third-row seats; keeps dirt and grime out regardless of seating configuration.



## Plastic hood protector

Help prevent dents and scratches caused by road and vehicle debris with an attractive plastic hood protector.





Dealer stamp

## One of the best-backed warranties in Canada.

You will see that a number of our vehicles have received multiple awards from the most reputable third-party organizations, so you can take their word when it comes to the quality of our vehicles. This quality is equally matched by the quality of our warranty. We stand confidently behind our products to give you ultimate peace of mind with a 5-year/100,000 kilometre Comprehensive Limited Warranty<sup>1</sup>. We also provide a 5-year/Unlimited kilometre Roadside Assistance Program<sup>2</sup> featuring flat tire changing, lockout service and more. Just one toll-free call away, 24 hours a day.

<sup>TM/®</sup>The Hyundai name, logos, product names, feature names, images and slogans are trademarks owned or licensed by Hyundai Auto Canada Corp.. Specifications, features, illustrations, accessories, materials and equipment and all other information shown in this brochure are based on the latest information available at the time of publication. Although descriptions are believed to be correct, accuracy cannot be guaranteed. Hyundai Auto Canada Corp. reserves the right to make any changes or modifications at any time, without notice or obligation, including, without limitation, in colour, specifications, features, accessories, materials, equipment and models. Some vehicles are shown with optional equipment. All Hyundai warranties have no deductible. <sup>1</sup>Hyundai's Comprehensive Limited Warranty coverage covers most vehicle components against defects in workmanship under normal use and maintenance conditions. <sup>2</sup>Hyundai's 24-Hour Roadside Assistance Program is a limited service and does not cover certain costs or expenses. Roadside Assistance is not a warranty. <sup>3</sup>Apple CarPlay<sup>TM</sup> may not be available on all devices and may not be available in all countries or regions. Visit [www.apple.com](http://www.apple.com) for further details and any applicable limitations. Apple and Apple CarPlay are trademarks of Apple Inc.. <sup>4</sup>Android Auto<sup>TM</sup> may not be available on all devices and may not be available in all countries or regions. Visit [www.android.com](http://www.android.com) for further details and any applicable limitations. Android and Android Auto are trademarks of Google Inc.. <sup>5</sup>Vehicle is equipped with the ability to access SiriusXM radio. Does not include subscription. The SiriusXM<sup>TM</sup> name is a trademark of SiriusXM Satellite Radio Inc.. <sup>6</sup>Available on select models only. BlueLink<sup>®</sup> includes 3 years of service without charge. The BlueLink service is available for new vehicle purchases and leases subject to the BlueLink subscription terms and conditions. Only use BlueLink and corresponding devices when safe to do so. Cellular and GPS coverage is required. Features, specifications and fees may vary by model and are subject to change. For more on details and limitations, visit [hyundaicanada.com](http://hyundaicanada.com) or your authorized Hyundai dealer. Bluetooth<sup>®</sup> word mark and logos are registered trademarks owned by Bluetooth SIG, Inc.. harman/kardon<sup>®</sup> is a registered trademark of Harman International, Inc.. HomeLink<sup>®</sup> is a registered trademark of Johnson Controls Inc.. All other trademarks and trade names are those of their respective owners. Some images shown with special graphic effects.

**Hyundai Auto Canada Corp.**  
[hyundaicanada.com](http://hyundaicanada.com)

