

# PALISADE

2021



# A bit about us.

With Hyundai, you can really have it all.

Our company believes in pushing the boundaries and challenging conventional thinking. Our very name, “Hyundai”, stands for modernity in the Korean language and it is this one word that helps represent everything we stand for. We don’t approach vehicle development in a traditional way. Our company is structured differently. We think differently. We find the modern way. It’s our mission to offer top quality, feature-rich vehicles at an affordable price.

We offer elite quality through meticulous design and painstaking craftsmanship. Our three design centres in Korea, the U.S. and Europe compete against each other to bring you cutting-edge designs — designs that not only look stunning but are also aerodynamic and fuel efficient.

We are the only global automaker to manufacture our own Advanced High-Strength Steel because, simply put, we just weren’t satisfied with what was available.

We test our vehicles in areas like the Arctic, our proving grounds in the Mojave Desert and on Germany’s world-famous Nürburgring circuit to deliver the durability and reliability you demand. And not only do we package our vehicles with advanced safety and technology, we back all our vehicles with one of the best automotive warranties in the industry. This means you really can have it all, quality and value together.



Palisade SUPERSTRUCTURE™ shown,  
made with our Advanced High-Strength Steel.

# The room to move you.

The 2021 Palisade features available 8-passenger premium seating space in an elegantly modern and intuitive interior that thinks about everyone in every row. With incredible convenience technologies at hand and a wealth of Hyundai SmartSense™ safety innovations, the 2021 Palisade is truly a remarkable SUV that is perfect for family life.



## Explore with confidence.

The Palisade proves itself to be a highly capable performer thanks to our available HTRAC™ All-Wheel Drive (AWD) system. With a quick turn of the drive mode selector dial, you can easily customize the traction distribution with HTRAC™ Intelligent Drive Modes and access Multi-terrain Control Modes for added confidence on specific types of terrain. Constantly monitoring multiple input signals processed over 100 times per second, the system will automatically redistribute wheel traction based on road conditions to help ensure absolute control.

### HTRAC™ Intelligent Drive Modes

### HTRAC™ Multi-terrain Control Modes



DEALER ePROCESS

# Take on every day in style.

No matter the busy day ahead, the versatile Palisade will get you through it all with elevated style. A dominant wide cascading grille and available 20" alloy wheels emphasize the strength and luxurious quality that lies within. The signature composition of the LED daytime running lights and vertically stacked headlights make a striking statement and leave a lasting impression.



Available 20" alloy wheels



Standard LED headlights with a Calligraphy-exclusive front fascia  
Available LED tail lights



# Command the road in comfort.

No detail has been overlooked. Everything in the cabin is crafted with fine materials and designed for maximum comfort. A wealth of impressive features wraps you in ultimate luxury no matter where you're seated. Sink into the bolstered front seats that feature available Nappa leather with premium quilted details.

An available 12-way power driver's seat lets you find the perfect position and support. Second-row passengers will appreciate the spacious design to stretch out and feel like first-class passengers with available features like heated and ventilated\* seats. Available second-row captain's chairs further the luxury experience. Everyone will appreciate the available dual-panel power sunroof that brightens up the interior.



Available second-row captain's chairs



Luxury model shown.  
May not be exactly as shown.

# Thoughtful features throughout the cabin.

The Palisade does an exceptional job of accommodating everyone's needs, starting with seven standard USB outlets dispersed throughout the cabin. Innovative rear air vents keep air flowing and allow rear passengers to select between a focused, partially diffused or fully diffused stream of air. Thanks to the available three-zone climate control, both the driver and front passenger can select their desired temperatures, as well as the second-row passengers. Easily communicate with those in the third row with an available in-vehicle intercom system, or keep things extra quiet for sleeping children by setting the audio system to Quiet Mode to mute the rear speakers.



Standard rear-seat Quiet Mode  
Available Driver Talk intercom system  
Available manual rear sunshade blinds  
Standard USB outlets (seven total)

# Technology surrounds you.

Apple CarPlay™, Android Auto™ and Bluetooth® connections all come standard to make accessing your favourite smartphone apps and taking phone calls effortless. Available on Luxury and Ultimate Calligraphy models is up to two Bluetooth® device connections simultaneously, so one can be connected to take phone calls while another phone can be used for audio streaming. Whatever you play, everyone will enjoy a surround sound experience with the available premium harman/kardon® 630-watt audio system featuring 12 speakers.

The available 10.25" touch-screen display offers a built-in navigation system and a Surround View Monitor that displays a 360-degree view of the Palisade for added guidance when parking in tight spaces. Available technologies like the 12.3" full digital instrument cluster and windshield-projected Head-Up Display offer various information displays to command the road with confidence.



## Wireless Apple CarPlay™ and Android Auto™

Wireless smartphone connectivity via Apple CarPlay™ and Android Auto™ is a new 2021 standard feature on Essential and Preferred models. The Luxury and Ultimate Calligraphy models feature Apple CarPlay™ and Android Auto™ with a cable connection required.



Available smart power liftgate



Available 12.3" full digital instrument cluster with Blind View Monitor

Available harman/kardon® audio system



Available Head-Up Display  
Available Surround View Monitor



# Hyundai SmartSense™

Road-trip with confidence and peace of mind with the extensive list of Hyundai SmartSense™ safety technologies offered with the Palisade. Among them are two available features designed to reduce your blind spot area.

First is the confidence-inspiring Blind View Monitor<sup>1</sup> that streams a live visual of your blind spot directly into the gauge cluster to provide you with added perspective. The second is our innovative Blind-Spot Collision-Avoidance Assist<sup>2</sup> system that not only uses radar to detect when a vehicle is in the driver's blind spot, but will also help avoid a collision by gently applying brake power on the opposite tire to deter an unsafe lane change.

## Standard features:



Forward Collision-Avoidance Assist with Pedestrian Detection



Lane Departure Warning with Lane Keeping Assist



Adaptive Cruise Control with traffic stop and go



Lane Following Assist



High Beam Assist



Driver Attention Warning



Parking Distance Warning - Reverse



Rear Occupant Alert

## Available features:



Blind-Spot Collision-Avoidance Assist



Blind View Monitor



Rear Cross-Traffic Collision-Avoidance Assist



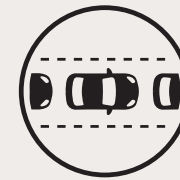
Safe Exit Assist



Ultrasonic Rear Occupant Alert



Parking Distance Warning - Front



Highway Driving Assist

# Ultimate convenience. Ultimate connectivity.

Bluelink<sup>®</sup> is our connected vehicle system that is available throughout our vehicle lineup. The advanced system conveniently keeps you connected with your Hyundai via the smartphone app, and offers a suite of services at the press of a button. Visit [hyundaicanada.com/bluelink](http://hyundaicanada.com/bluelink) or see your dealer for more information on the complete list of innovative features that Bluelink<sup>®</sup> puts at your fingertips.



Remote start with climate control



SOS emergency and roadside assistance



Automatic collision notification



Remote lock/unlock



Find my car



Local search



Real-time diagnostics



Find a dealer



Complimentary  
3-year subscription on  
equipped models



DEALER ePROCESS

# Find the PALISADE that is right for you.

## Essential FWD

Standard equipment includes:

### Performance features:

- 3.8L GDI V6 engine with idle start-stop (291 horsepower, 262 lb-ft torque)
- 8-speed automatic transmission with SHIFTRONIC® paddle shifters
- Button-type Shift-by-Wire
- Drive Mode Select
- Electronic Parking Brake
- Front-Wheel Drive (FWD)
- Trailer preparation package (full wiring and transmission cooler)

### Exterior features:

- 18" alloy wheels
- LED daytime running and position lights
- LED headlights (low and high beam)
- Acoustically laminated windshield
- Acoustically laminated front windows
- Roof side rails
- Automatic headlights
- Heated, power-adjustable side mirrors
- Front solar glass and rear privacy glass

### Interior features:

- 8-passenger seating capacity
- 8.0" touch-screen display with wireless Apple CarPlay™<sup>Δ</sup> and Android Auto™<sup>Ω</sup>
- Heated front seats
- Heated, leather-wrapped haptic steering wheel
- Bluetooth® hands-free phone system with voice recognition
- 7 USB ports
- Rearview camera with dynamic guidelines
- Smart one-touch second-row folding and sliding seats
- Power windows with driver's and front passenger's auto-up/down
- Rear-seat Quiet Mode
- Cargo cover and net
- HD Radio

### Safety features:

- Adaptive Cruise Control with traffic stop and go
- Forward Collision-Avoidance Assist with Pedestrian Detection
- Lane Departure Warning with Lane Keeping Assist
- Lane Following Assist
- Rear Occupant Alert
- High Beam Assist
- Driver Attention Warning
- Parking Distance Warning – Reverse
- Tire Pressure Monitoring System
- 7 airbags (including driver's knee airbag)

### Optional:

- HTRAC™ All-Wheel Drive (AWD) with Multi-terrain Control Modes

## Preferred AWD

Includes **Essential AWD** standard equipment plus:

### Performance features:

- Auto-levelling rear suspension

### Exterior features:

- 20" alloy wheels, machined finish
- Dark chrome-coated front grille
- Side mirrors with turn signal indicators

### Interior features:

- Proximity keyless entry with push-button ignition and remote start
- Single front tilting and sliding power sunroof
- 7" LCD instrument cluster
- 8-way power driver's seat with 2-way lumbar support
- 8-way power passenger's seat
- Driver's Integrated Memory System — seats and side mirrors
- Dual-zone automatic climate control with CleanAir ionizer and auto-defogging windshield system
- Rear single-zone automatic climate control
- Heated rear seats
- Electrochromic auto-dimming rearview mirror with HomeLink®
- Manual rear sunshade blinds

### Safety features:

- Blind-Spot Collision-Avoidance Assist
- Rear Cross-Traffic Collision-Avoidance Assist
- Safe Exit Assist
- Ultrasonic Rear Occupant Alert
- Power child lock

## Cargo versatility.

The cabin space can be easily configured in a variety of different ways to tackle the demands of the moment. For added convenience, the second-row seats include a smart one-touch walk-in button for easier third-row entry. With the second and third row folded, the Palisade offers a generous 2,447 litres of total cargo capacity. Third-row seats also feature available power-folding at the press of a button to make it easier to access all that space.

## Luxury AWD

Includes **Preferred AWD** standard equipment plus:

### Exterior features:

- Smart Power Liftgate
- Satin chrome exterior door handles

### Interior features:

- Leather seating surfaces
- Surround View Monitor
- 10.25" touch-screen navigation system with Apple CarPlay™<sup>Δ</sup> and Android Auto™<sup>Ω</sup>
- Bluelink® connected vehicle system<sup>Ω</sup>
- harman/kardon® premium audio system with 12 speakers
- SiriusXM™<sup>†</sup>
- Ventilated front seats
- Power folding, unfolding and reclining third-row seats
- Power extendable driver's seat cushion
- Deluxe door scuff
- Leather-wrapped crash pad garnish
- Driver Talk intercom system
- LED interior lighting
- Driver's seat 4-way power lumbar support

### Safety features:

- Blind View Monitor
- Parking Distance Warning — Front

### Optional:

- 7-passenger seating with second-row captain's chairs

## Ultimate Calligraphy AWD

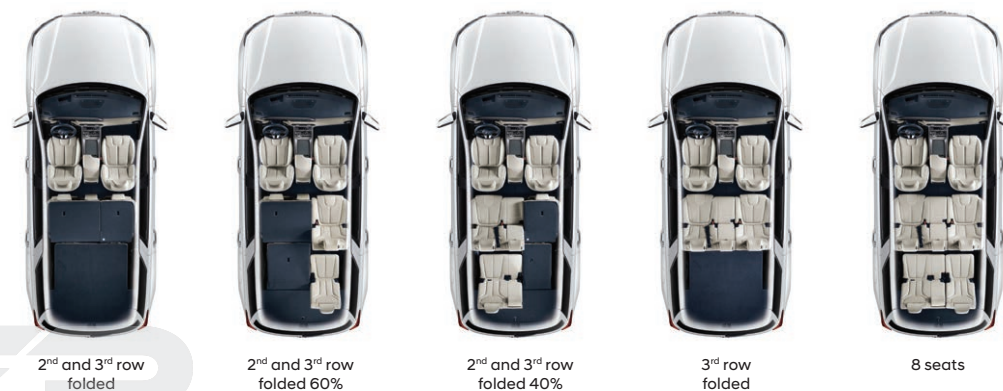
Includes **Luxury AWD 7-passenger** standard equipment plus:

### Exterior features:

- Calligraphy-exclusive 20" alloy wheels
- Calligraphy-exclusive front grille
- Calligraphy-exclusive front fascia
- Calligraphy-exclusive front and rear skid plates
- LED tail lights
- Rain-sensing windshield wipers
- Body-coloured wheel arches and fascia trim
- Puddle lamps

### Interior features:

- Premium Nappa leather seating surfaces
- Second-row fixed wide panel sunroof
- 12.3" full digital display instrument cluster
- Head-Up Display
- Wireless charging pad<sup>▼</sup>
- Ventilated second-row seats
- Suede headliner
- 115 V A/C inverter



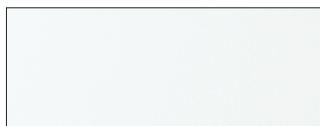
Up to 2,447 L total cargo capacity  
8-passenger model shown.

# Colours and wheels.

## Exterior colours\*



Becketts Black



Hyper White



Typhoon Silver\*



Steel Graphite

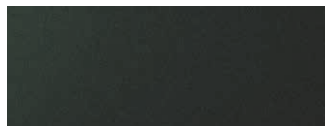


Sierra Burgundy

Not available on Essential model

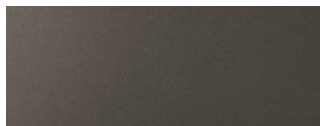


Moonlight Cloud



Rainforest

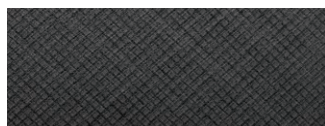
Not available on Essential and Preferred models



Taiga Brown^

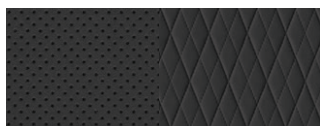
Available on Ultimate Calligraphy model only

## Interior colours\*



Obsidian Black Cloth

Standard on Essential and Preferred models



Midnight Black Leather

Standard on Luxury model



Harbour Grey Leather

Available on Luxury model (Hyper White, Steel Graphite and Moonlight Cloud exterior colours only)



Midnight Black Nappa Leather

Standard on Ultimate Calligraphy model (not available with Taiga Brown)



Harbour Grey Nappa Leather

Available on Ultimate Calligraphy model (Hyper White, Steel Graphite and Moonlight Cloud exterior colours only)



Pearl Beige Nappa Leather

Available on Ultimate Calligraphy model (Becketts Black and Sierra Burgundy exterior colours only, standard with Taiga Brown exterior colour)

## Wheels



18" alloy wheel  
Standard on Essential model



20" alloy wheel,  
machined finish  
Standard on Preferred and Luxury models



20" alloy wheel,  
Calligraphy-exclusive  
Standard on Ultimate Calligraphy model

# Accessories.



## Trailer hitch kit

Designed to meet your towing needs, a Hyundai hitch can accommodate a wide variety of hitch-mounted accessories.



## Cross rails

This durable, quick-locking cross rail system lets you transport cargo easily, without sacrificing interior room.



## Side steps

Heavy-duty stainless steel chrome step tubes with slip-resistant foot pads will provide a solid step and unique eye-catching design exclusive to Hyundai.



## Premium all-weather floor liners

Premium all-weather floor liners were designed to cover the interior carpet providing maximum protection against the elements that other mats cannot offer. Remove carpet mats prior to installation.

<b>5</b> YEAR	<b>100,000 km</b> Comprehensive Limited Warranty*
<b>5</b> YEAR	<b>100,000 km</b> Powertrain Warranty
<b>5</b> YEAR	<b>100,000 km</b> Emission Warranty
<b>5</b> YEAR	<b>Unlimited km</b> Roadside Assistance Program**

## One of the best-backed warranties in Canada.

You will see that a number of our vehicles have received multiple awards from the most reputable third-party organizations, so you can take their word when it comes to the quality of our vehicles. This quality is equally matched by the quality of our warranty. We stand confidently behind our products to give you ultimate peace of mind with a 5-year/100,000 kilometre Comprehensive Limited Warranty†. We also provide a 5-year/Unlimited kilometre Roadside Assistance Program\*\* featuring flat tire changing, lockout service and more. Just one toll-free call away, 24 hours a day.

™/®The Hyundai name, logos, product names, feature names, images and slogans are trademarks owned or licensed by Hyundai Auto Canada Corp.. Specifications, features, illustrations, accessories, materials and equipment and all other information shown in this brochure are based on the latest information available at the time of publication. Although descriptions are believed to be correct, accuracy cannot be guaranteed. Hyundai Auto Canada Corp. reserves the right to make any changes or modifications at any time, without notice or obligation, including, without limitation, in colour, specifications, features, accessories, materials, equipment and models. Some vehicles are shown with optional equipment. All Hyundai warranties have no deductible. \*Hyundai's Comprehensive Limited Warranty coverage covers most vehicle components against defects in workmanship under normal use and maintenance conditions. \*\*Hyundai's 24-Hour Roadside Assistance Program is a limited service and does not cover certain costs or expenses. Roadside Assistance is not a warranty. †Apple CarPlay™ may not be available on all devices and may not be available in all countries or regions. Visit [www.apple.com](http://www.apple.com) for further details and any applicable limitations. Apple and Apple CarPlay are trademarks of Apple Inc.. ‡Android Auto™ may not be available on all devices and may not be available in all countries or regions. Visit [www.android.com](http://www.android.com) for further details and any applicable limitations. Android and Android Auto are trademarks of Google Inc.. †Vehicle is equipped with the ability to access SiriusXM radio. Does not include subscription. The SiriusXM™ name is a trademark of SiriusXM Satellite Radio Inc.. ‡Available on select models only. BlueLink® includes 3 years of service without charge. The BlueLink service is available for new vehicle purchases and leases subject to the BlueLink subscription terms and conditions. Only use BlueLink and corresponding devices when safe to do so. Cellular and GPS coverage is required. Features, specifications, and fees may vary by model and are subject to change. For more on details and limitations, visit [hyundaicanada.com](http://hyundaicanada.com) or your authorized Hyundai dealer. †Blind View Monitor (BVM) assists driver in changing lanes by providing a live view of the blind spots on either side of the vehicle and an audible alert if another vehicle is detected. Turn signal must be activated and other system limitations apply. Do not rely exclusively on BVM. It is the driver's responsibility to be aware of surroundings and ensure they are clear before changing lanes or directions. See Owner's Manual for more information. ‡Never rely completely on Blind-Spot Collision-Avoidance Assist (BCA) and be sure to use proper lane changing procedures. BCA is activated when the vehicle is travelling at least 60 km/h and when the turn signals are activated. BCA will not detect every object or vehicle and will not prevent accidents. The braking function may not always avoid a collision. There are limitations to the function, range, detection and clarity of the system. BCA is dependent on the side, distance, angle and relative speed difference between the vehicle and other vehicles and will not operate if sensors are obscured. Always look over your shoulder and use your mirrors to confirm clearance. See Owner's Manual for further details and limitations. \*Available with 7-passenger seating configuration only. Bluetooth® word mark and logos are registered trademarks owned by Bluetooth SIG, Inc.. harman/kardon® is a registered trademark of Harman International, Inc.. HomeLink® is a registered trademark of Johnson Controls Inc.. All other trademarks and trade names are those of their respective owners. Some images shown with special graphic effects.

**Hyundai Auto Canada Corp.**  
[hyundaicanada.com](http://hyundaicanada.com)



DEALER ePROCESS